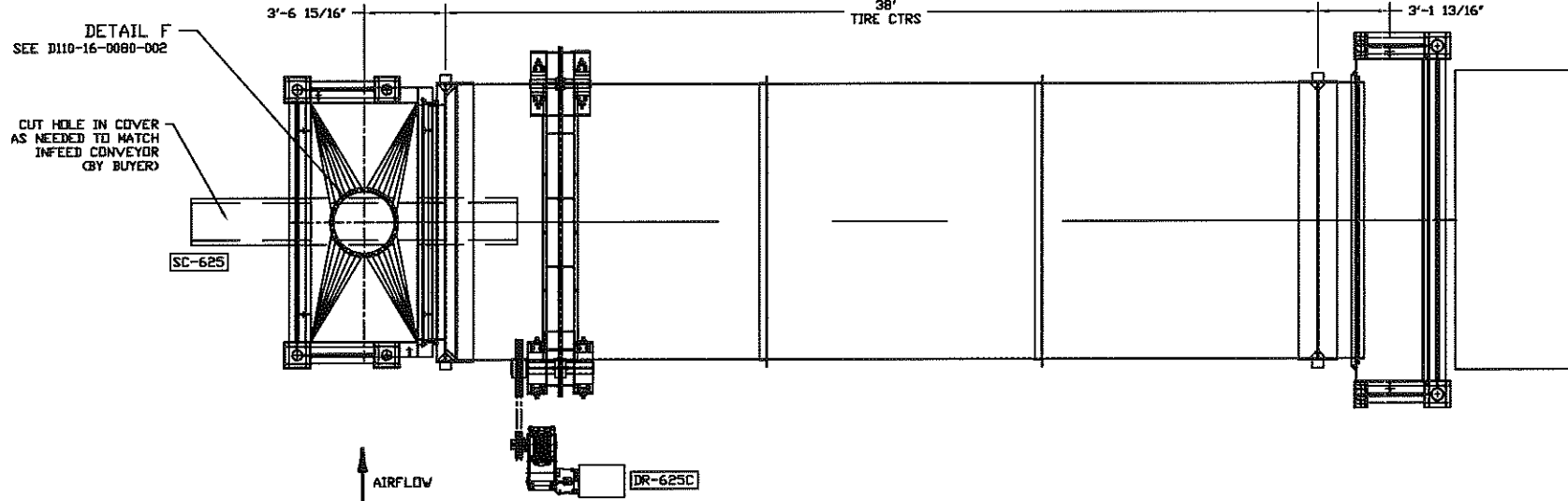
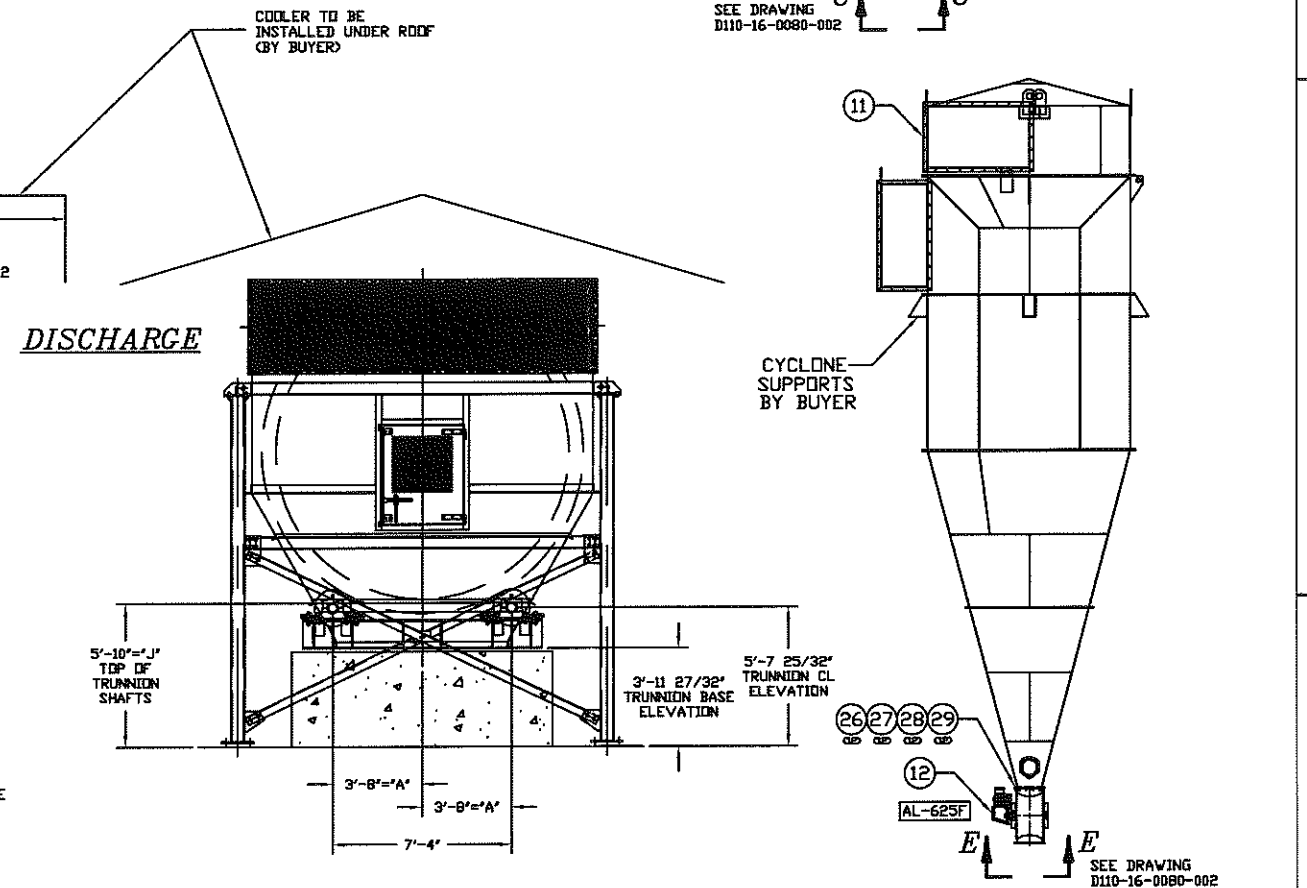
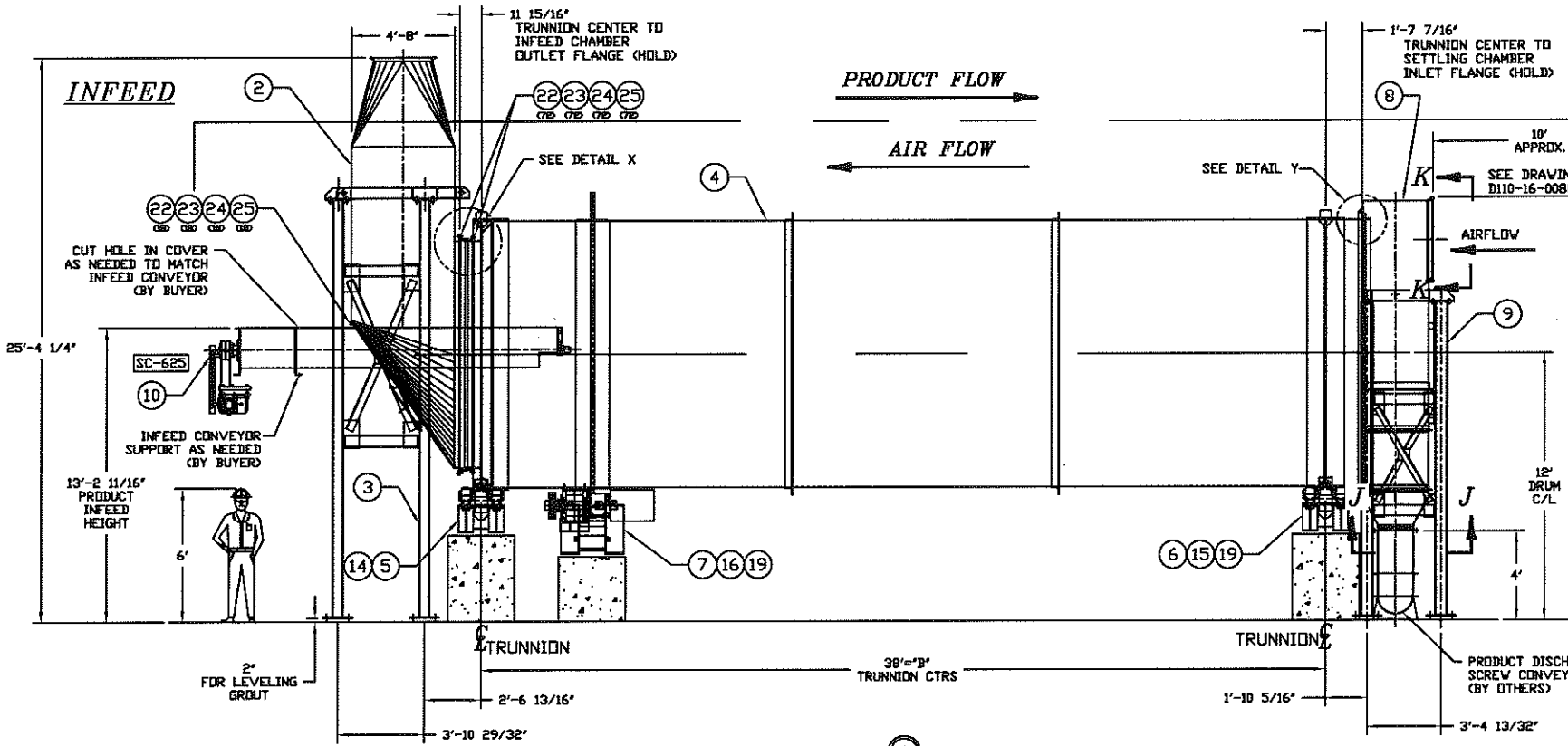
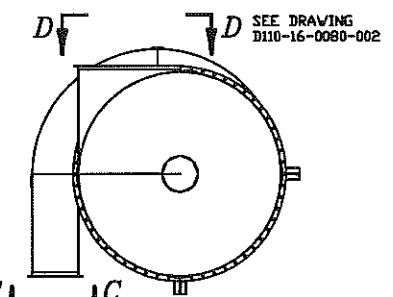


ASSEMBLY NUMBER AND QUANTITY FOR ONE UNIT		ITEM NO.	MAT'L SPEC OR PART NO.	DESCRIPTION	W	L	NLR	DWG. ASSY OR ITEM NO.
PARENT ASSEMBLY								D110-16-0080-001
	X	1		INSTALLATION ASSEMBLY				D110-16-0080-001-01
	1	D 2		INFEED CHAMBER				D1136408 3694 COOLING INFEED
	1	D 3		INFEED CHAMBER STAND ASSEMBLY				DSK07103-82
	1	D 4		COOLER DRUM				D1136408 3562 COOLING
	1	D 5		COOLER TRUNNION (FEED END)				D1136408 3563 CTRUNNION
	1	D 6		COOLER TRUNNION (DISCHARGE END)				D1136408 3563 CTRUNNION
	1	D 7		CRADLE DRIVE ASSEMBLY				D1136408 3688 COOLING DRIVE
	1	D 8		COOLER SETTLING CHAMBER				D1136408 3564 COOLING SETTLING
	1	D 9		COOLER SETTLING CHAMBER STAND ASSEMBLY				DSK07103-82
	1	10	300-5059	SCREW CONVEYOR 18" X 14'-6" CS				D110-16-0080-001/10
	1	D 11	07103-4 C. CYCL	CYCLONE 23,300 ACFM C. S. PAINTED				D110-16-0080-001/11
	1	12	07103 AIRLOCK 3	AIRLOCK MILD STEEL 12" ROUND FLANG				D110-16-0080-001/12
	1	D 13	300-4949	FAN-BCS 330 CL 17 CW ARR9F (BD SW/S)				D110-16-0080-001/13
	1	D 14		TRUNNION GUARDING ASSEMBLY (FEED END)				DSK07103-83
	1	D 15		TRUNNION GUARDING ASSEMBLY (DISCHARGE END)				DSK07103-84
	1	D 16		DRIVE GUARDING ASSEMBLY				DSK07103-85
	1	17		INSTRUMENTATION ASSEMBLY				DSK07103-46-01
	1	18		TRUNNION ALIGNMENT DESCRIPTION & TOLERANCES				D023-16-0118-003
	1	19		TRUNNION BEARING SHIM PACK				BSK07103-76-02
	1	20		SERIAL NUMBER NAMEPLATE				BSK07103-86
	1	21		SECTIONS AND DETAILS				D110-16-0080-002
	100	L 22	01-0254	BOLT-HX HD 1/2-13 X 1-3/4 GR2 ZN				D110-16-0080-001/22
	100	L 23	01-0011	NUT-HX 1/2-13 GR2 ZN				D110-16-0080-001/23
	100	L 24	01-0623	WASHER-FL USS 1/2 GR2 ZN				D110-16-0080-001/24
	100	L 25	01-0637	WASHER-LOCK SPLIT 1/2 GR2 ZN				D110-16-0080-001/25
	14	L 26	01-0234	BOLT-HX HD 3/8-16 X 1-1/2 GR2 ZN				D110-16-0080-001/26
	80	L 27	01-0014	NUT-HX 3/8-16 GR2 ZN				D110-16-0080-001/27
	80	L 28	01-0622	WASHER-FL USS 3/8 GR2 ZN				D110-16-0080-001/28
	80	L 29	01-0636	WASHER-LOCK SPLIT 3/8 GR2 ZN				D110-16-0080-001/29



RECOMMENDED ACCESS PLATFORM FOR SETTLING CHAMBER (BY BUYER)



SHOP NOTES:
 1. COOLER TO BE INSTALLED UNDER ROOF. SIDES ARE NOT REQUIRED.
 2. AEROGlide RECOMMENDS INSTALLATION OF AN ACCESS PLATFORM FOR THE SETTLING CHAMBER (BY BUYER).
 3. ALL DUCTWORK IS SUPPLIED BY BUYER.
 4. CONTROL PANEL IS NOT SHOWN - CONTROLS ARE INCORPORATED IN PANEL FOR DRIER 07103-02.
 5. REFER TO DWG D023-16-0118-003 REV A. FOR TRUNNION DIMENSIONS LABELED WITH A LETTER.

REV	DESCRIPTION	DATE	BY
D	ADDED INSTALLATION DIMENSIONS & NOTE	1/18/08	CAG
C	ADDED INSTALLATION DIMENSIONS FOR CLARIFICATION	1/18/08	CAG
B	ADDED VARIOUS DETAILS	1/22/08	BRCK
A	ADDED EQUIPMENT NUMBERS FOR CUSTOMER REQUEST	1/17/08	CAG

TOLERANCES UNLESS NOTED
 FRACTION ± 1/16 DECIMAL ± 0.015
 SURFACE FINISH NOTE
 UNLESS OTHERWISE SPECIFIED, ROUGHNESS HEIGHT ON ALL MACHINED SURFACES SHALL NOT EXCEED
 125 MICRO-INCHES
 ALL DIMENSIONS ARE IN INCHES EXCEPT AS NOTED

COPYRIGHT © AEROGlide CORP. ALL RIGHTS RESERVED. CONTENTS OF THIS DRAWING ARE THE EXCLUSIVE PROPERTY OF AEROGlide CORP. AND MAY NOT BE USED FOR ANY PURPOSE OTHER THAN THAT WHICH SUBMITTED, NOR DIVULGED TO ANY THIRD PARTY WITHOUT ITS EXPRESS WRITTEN PERMISSION.

DRAWN: CAB 11/4/08
 DESIGN: CAB 11/4/08
 CHECK: []
 APPROVED: []
 SCALE: 1/4" = 12"

Aeroglide Corporation
 TELEPHONE (919) 851-2000 P.O. BOX 28505
 FAX (919) 851-8029 RALEIGH, NORTH CAROLINA 27626

TITLE: **ROTARY COOLER INSTALLATION ASSEMBLY (R1 144-40 XXC)**

JOB NO. 07103.3
 REV. D
 DRAWING NUMBER D110-16-0080-001